

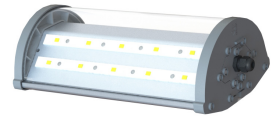
LED Light Fixture



IP65

Street-Ex series

Explosion-proof illumination



Street-30-Ex



Street-50-Ex



Street-70-Ex



Street-100-Ex



Outdoor areas with potentially explosive atmosphere of gas, dust and vapor in accordance with State Standards IEC 60079-0-2011, IEC 60079-15-2010, IEC 61241-1-2-2011.

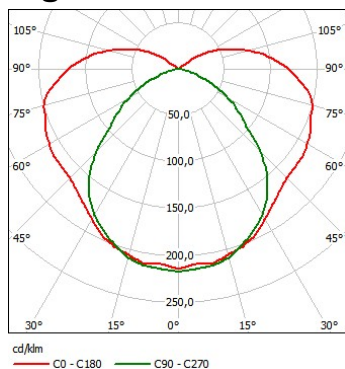
Basic parameters of LED light fixture

Product name	Light flux, lm	Power consumption, W	Explosion-proof construction	IP degree	Overall dimensions (AxBxC), mm	Weight, kg
Street-30-Ex (SSO-A-220-003-N/W-MCC1-Ex)	3250	26	Ex nR II T4 Gc / DIP A21 TA(110...135)°C	IP65	310x180x107	3,0
Street-50-Ex (SSO-B-220-004-N/W-MCC1-Ex)	7440	62			635x180x107	5,5
Street-70-Ex (SSO-A-220-010-N/W-MCC1-Ex)	11250	90			715x180x107	6,0
Street-100-Ex (SSO-B-220-005-N/W-MCC1-Ex)	15000	125			1228x180x107	10,0

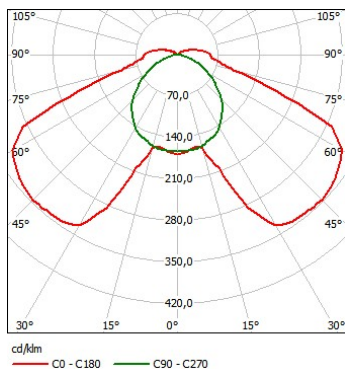
General parameters of LED light fixture

AC supply voltage, V	from 140 to 265
Frequency, Hz	50±10%
DC supply voltage, V	from 200 to 370
Operating temperature range, °C	from - 40 to + 60
Emission color	white
Colour temperature of emission, K	W - 3000÷4000/N - 4000÷6000
Electric shock protection class in accordance with IEC 60598-1, part 8	I
Climatic performance in accordance with State Standard 15150	MCC1
Warranty, years	5
Durability, hours	100000

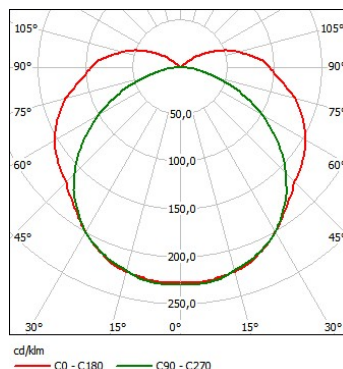
Light Distribution Curve



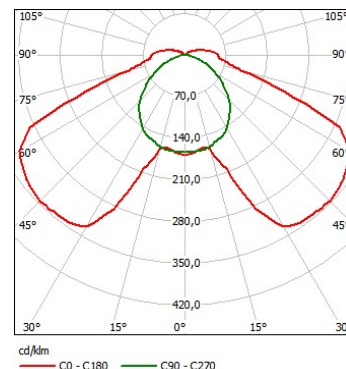
A - cosine
Street-30-Ex



B - wide
Street-50-Ex

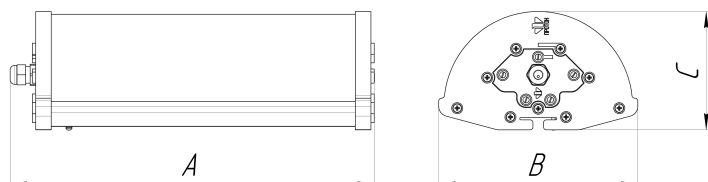


A - cosine
Street-70-Ex



B - wide
Street-100-Ex

Overall dimensions of LED light fixture



Installation type of LED light fixture

