

LED Light Fixture



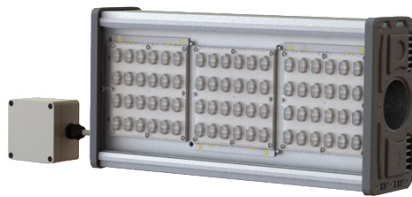
Avenue-Ex series



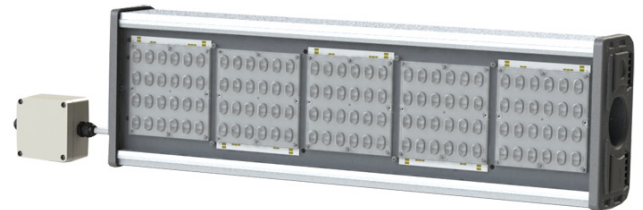
Avenue-60-Ex



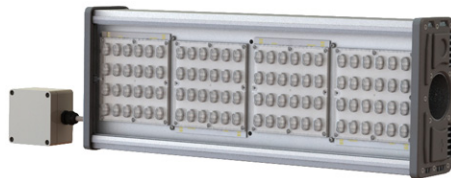
Avenue-30-Ex



Avenue-90-Ex



Avenue-150-Ex



Avenue-120-Ex



Avenue-180-Ex

Explosion-proof illumination



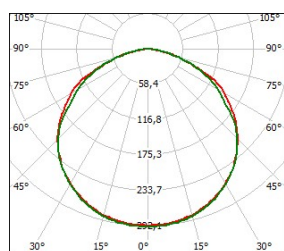
Outdoor areas with potentially explosive atmosphere of gas, dust and vapor in accordance with State Standards IEC 60079-0-2011, IEC 60079-15-2010, IEC 61241-1-2-2011.

Product name	Light flux, lm	Power consumption, W	Explosion-proof construction	IP degree	Overall dimensions (AxBxC), mm	Weight, kg
Avenue-30-Ex (SKS- A/B/C-220-001-N/W-MCC1-Ex)	3750	30	Ex nR II T4 Gc/ DIP A21 TA(110...135)°C	IP67	395x209x105	3,4/3,8
Avenue-60-Ex (SKS- A/B/C-220-002-N/W-MCC1-Ex)	7500	60			495x209x105	5,7/6,1
Avenue-90-Ex (SKS- A/B/C-220-003-N/W-MCC1-Ex)	11250	90			605x209x105	7,7/8,1
Avenue-120-Ex (SKS- A/B/C-220-004-N/W-MCC1-Ex)	15000	120			730x209x105	9,9/10,7
Avenue-150-Ex (SKS- A/B/C-220-005-N/W-MCC1-Ex)	18750	150			870x209x105	11,5/12,3
Avenue-180-Ex (SKS- A/B/C-220-006-N/W-MCC1-Ex)	22500	180			990x209x105	13,4/14,2

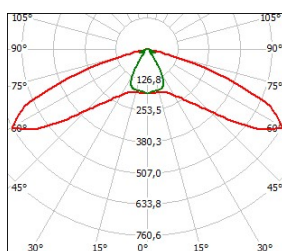
General parameters of LED light fixture

AC Supply voltage, V	от 140 до 265
Frequency, Hz	50 ± 10%
DC supply voltage, V	от 200 до 370
Operating temperature range, °C	от - 40 до + 60
Emission color	white
Color temperature of emission, K	W - 3000÷4000/N - 4000÷6000
Electric shock protection class in accordance with 60598-1, part 8	I
Climatic performance in accordance with State Standard 15150	MCC1
Warranty, years	5
Durability, hours	100000

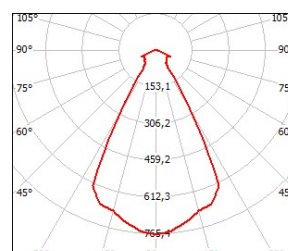
Light Distribution Curve



A – cosine

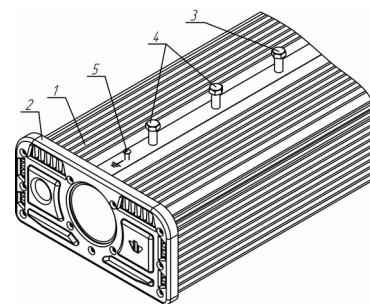
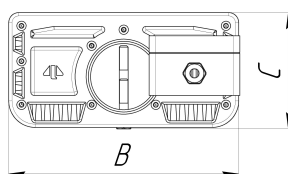
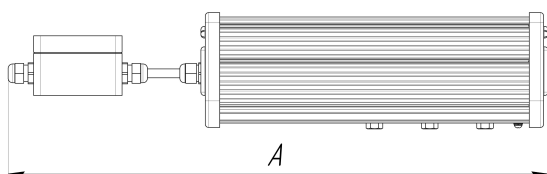


B – wide



C - deep

Overall dimensions of LED light fixture with console installation type including service box



Overall dimensions of LED light fixture with bracket installation type including service box

