

LED Light Fixture

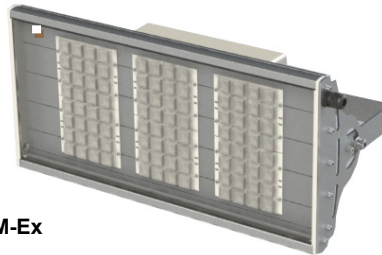


Lyumen-Ex series

Explosion-proof illumination



Lyumen-4-Ex



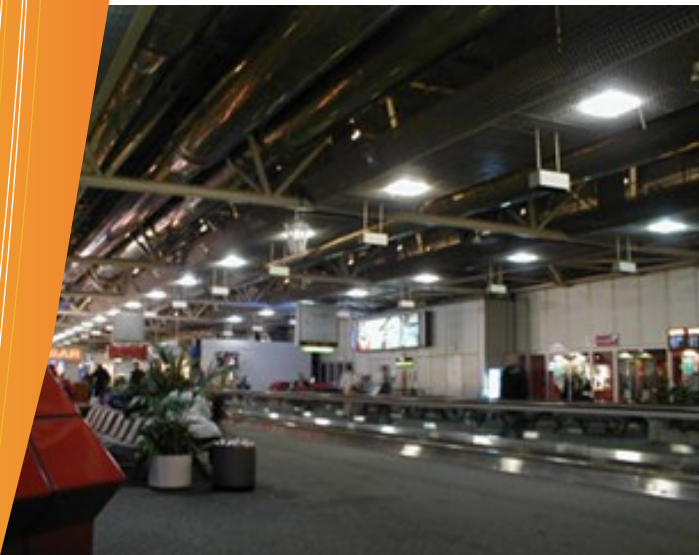
Lyumen-4M-Ex



Lyumen-5-Ex



Lyumen-5M-Ex



Indoor areas with potentially explosive atmosphere of gas, dust and vapor in accordance with State Standards IEC 60079-0-2011, IEC 60079-15-2010, IEC 61241-1-2-2011.

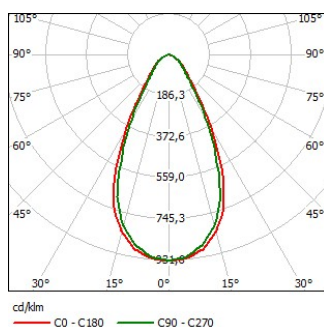
Basic parameters of LED light fixture

Product name	Light flux, lm	Power consumption, W	Operating temperature range, °C	Explosion-proof construction	IP degree	Overall dimensions (AxBxC), mm	Weight, kg
Lyumen-5-Ex (SPS-C-220-038-N/W-MCC1-Ex)	23000	210	from - 10 to + 60	Ex nR IIC T4 Gc X/ DIP A22 TA(110..135)°C	IP54	485×285×230	12,0
Lyumen-5M-Ex (SPS-C-220-039-N/W-MCC1-Ex)			from - 10 to + 70				14,0
Lyumen-4-Ex (SPS-C-220-036-N/W-MCC1-Ex)	26500	240	from - 10 to + 60			630×285×230	12,0
Lyumen-4M-Ex (SPS-C-220-037-N,W-MCC1-Ex)			from - 10 to + 70			13,0	

General parameters of LED light fixture

AC supply voltage, V	from 140 to 265
Frequency, Hz	50±10%
DC supply voltage, V	from 200 to 370
Emission color	white
Color temperature of emission, K	W- 3000÷4000/N- 4000÷6000
Electric shock protection class in accordance with IEC 60598-1, part 8	I
Climatic performance in accordance with State Standard 15150	MCC1
Warranty, years	5
Durability, hours	100000

Light Distribution Curve



C - deep

Overall dimensions and installation type of LED light fixture

